

FOR IMMEDIATE RELEASE: June 18, 2024

Media Contact: Julia Sheridan | julia@orpheuspx.org

**ORPHEUS|PDX ANNOUNCES PARTICIPANTS FOR ITS
2024 PATHWAYS PROGRAM**



This innovative training program assists young professionals in establishing their careers while guaranteeing a thriving future for the operatic art form.

(Portland, OR)—OrpheusPDX General and Artistic Director Christopher Mattaliano recently announced the participants in the company's 2024 Pathways Program. This innovative training program, established during the company's 2023 season, has been expanded in 2024 to welcome six mentees: Annissa Allred, Jillian Catanzaro, Rachel Errico, Melissa Heller, Alyssa Jewell, and Ray N.B. These artists range from designers to craft specialists and stage managers.

The Pathways Program is mentor-based and pairs a student or young professional with an established professional who has been engaged by OrpheusPDX for its 2024 productions. Participants spend the season assisting their mentor and are intimately involved in all aspects of that line of work.

“Like any other field,” Mattaliano said, “getting those first few connections can often be the most difficult steps. I recognize how fortunate I was early in my career to have assisted established professional artists, and how much I grew from their guidance and influence. I’m committed to providing those kinds of connections and experiences for the next generation.”

“The participants in this program dive in and learn on their feet,” he added. “They’re actively involved in the creative planning and daily rehearsal process—observing, participating, questioning, being allowed to make mistakes and learn from them—all under the guidance of an established professional mentor. There’s no better learning experience.”

Alyssa Jewell, an emerging scenic designer and recent Boston University graduate selected for the program, said “I am thrilled to have the opportunity to further my learning and growth through the Pathways Program with OrpheusPDX. The process thus far has been insightful and truly collaborative. Working with director/designer Chas Rader-Shieber has been a delight, and diving into the vast world of opera with him as my mentor has been an impactful introduction for me and my artistic practice.”

Rachel Errico, who participated in the initial 2023 program, said “Working with OrpheusPDX last year was my first time truly experiencing what the theater world is like outside of school. It was extremely valuable to learn from professionals like Connie Yun, Solomon Weisbard, Megan Wilkerson, and Peter Ksander during my time working on *The Royal Shepherd* and *Dark Sisters*. It was inspiring to see how the Orpheus teams collaborated to create such beautiful shows.”

“The Pathways Program and the welcoming team at OrpheusPDX have both really helped me feel more confident in my place in the professional world,” Errico continued.

THE 2024 PATHWAY PARTICIPANTS



Annissa Allred is studying stage management and technical theater at Portland State University. She will be a Stage Management Intern for *The Rose Elf*, mentored by Production Stage Manager **Alayna Powell**.



Jillian Catanzaro is a lighting design and film student at Portland State University. She will be the Assistant Lighting Designer for *The Rose Elf*, mentored by Lighting Designer **Solomon Weisbard**.



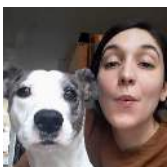
Rachel Errico is an aspiring lighting designer and Portland State University student. In her second year of the Pathways Program, she will be the Assistant Lighting Designer for *Acis, Galatea & Polyphemus*, also mentored by **Solomon Weisbard**.



Melissa Heller is a costume shop manager and designer based at Pacific University. She will be mentored by **Lucy Wells**, who designed last season's production of *Dark Sisters* and is Portland Center Stage's Costume Shop Supervisor.



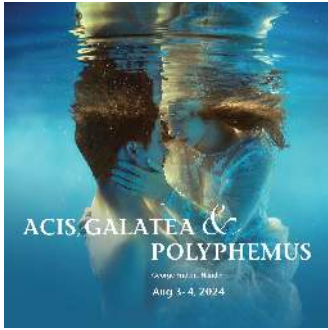
Alyssa Jewell is a Portland-based artist and recent Boston University M.F.A. graduate whose work is focused on live performance design and video installation. She will be the Associate Set Designer for *Acis, Galatea & Polyphemus*, mentored by Director/Set Designer **Chas Rader-Shieber**.



Ray N.B. is a multidisciplinary theater artist early in their career, with credits as a designer, technician, actor, and director. They will be the Props Master for *Acis, Galatea & Polyphemus*, mentored by Props Master/Costume Designer **Sumi Wu**.



ORPHEUS|PDX'S 2024 SEASON



ACIS, GALATEA & POLYPHEMUS

George Frideric Handel

Sat, Aug 3, at 7:30 pm & Sun, Aug 4, at 3:00 pm

Based on an intensely dramatic love story inspired by Ovid, this opera is full of show-stopping arias, duets, and trios, including some of Handel's most celebrated music.



THE ROSE ELF

David Hertzberg

Sat, Aug 17, at 7:30 pm & Sun, Aug 18, at 3:00 pm

When a tiny elf who lives within a rose witnesses a murder, it strives to give comfort to the victim's beloved. Featuring "lush, decadent musical passages and ecstatic vocal lines" (*Parterre*).

TICKET INFORMATION

All performances are at Portland State University's Lincoln Performance Hall. Tickets are on sale now and start at \$50. Season Subscribers save 10%. Students can purchase up to two tickets for \$15 each. Tickets can be purchased at OrpheusPDX.org or by contacting the box office at (503) 308-4828 or boxoffice@orpheuspdx.org.

ORPHEUS|PDX

Inspired by the legend of Orpheus and Eurydice, where Orpheus' singing is so beautiful that even the savage beasts of Hades are moved to tears, Portland's new professional opera company, OrpheusPDX, aspires to do the same—to touch the very soul of the community through the power of great music and

theater. OrpheusPDX enhances that powerful experience by producing opera in the intimate, 472-seat Lincoln Performance Hall, described as "Portland's best opera space" by *Opera News*. OrpheusPDX is committed to both honoring tradition and exploring new directions by presenting one classic opera from a well-loved 18th century composer and one great modern work by a living composer—thus providing audiences with the best of both operatic worlds each season.

###